

BIOMÉRIEUX

BIOMÉRIEUX LAB CONSULTANCY

# WASPLAB<sup>®</sup> DISCOVERY SOLUTION



PIONEERING DIAGNOSTICS



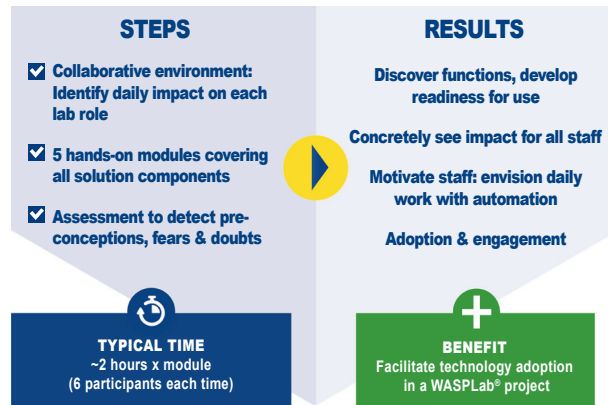
# UNLOCK WASPLAB'S POWER

WASPLab®, the **complete automated solution for specimen processing and reading**, is the ultimate way to meet all your lab productivity needs. When you incorporate WASPLab® into your existing lab and ways of working, your entire team will ultimately **discover the unique benefits** that make every day in the lab run smoother.

How can you best **prepare your team** through **effective change management** so that each one makes the most of WASPLab®'s impact on their role?

With the **WASPLab® Discovery Solution**, bioMérieux Lab Consultancy **supports you in your transformation** with

these specialized learning modules. Lab staff will be able to share perspectives and expectations; envision how WASPLab® will impact their daily work; and learn how to best leverage all the functionalities. The time investment depends on your needs, anywhere from one week to two months.



**“Change management is really very important because without the staff being involved we couldn't adopt the new technology. It wouldn't matter how good the equipment is, if we don't have the staff that are willing to use it, and that are happy to use it, and they understand how the equipment works. And that is essentially what the change management service is delivering.”**

Laboratory Manager, Public Hospital

**100% of participants highly satisfied or satisfied**

**100% of participants met their objectives and expectations**

**100% of participants willing to recommend it to other colleagues**

CHALLENGE YOURSELF



CONSULT WITH US



TRANSFORM TOGETHER



Challenge yourself to bring everyone on board with your unique WASPLab®. Consult with us for a WASPLab® Discovery Solution... or let us help you find the customizable bioMérieux Lab Consultancy services best suited to your lab transformation journey. **Because the human touch is the most important part of technology.**

For more information about bioMérieux Lab Consultancy, please contact your local bioMérieux representative or visit <http://www.biomerieux-diagnostics.com/biomerieux-lab-consultancy>

04-23 / 9323844 002/GB/8 / Document and/or pictures not legally binding. Modifications by bioMérieux can be made without prior notice. BIOMÉRIEUX and the BIOMÉRIEUX logo are used, pending and/or registered trademarks belonging to bioMérieux, or one of its subsidiaries; or one of its companies. / WASPLab is a trademark belonging to CopanItalia S.p.A.. Any other name or trademark is the property of its respective owner / bioMérieux S.A. RCS Lyon 673 620 399 / Photos: N. Bouchut, Getty / Printed in France / **thera** / RCS Lyon B 398 160 242