

BIOMÉRIEUX

Elevate Your Environmental Monitoring Program

Connects the Dots in Your Facility



Your Trusted Partner in Augmented Diagnostics

PIONEERING DIAGNOSTICS



Gain better control with digitalization

Monitoring your environment for microbial contamination is critical to food safety, yet can be a challenging task to implement and manage effectively. ENVIROMAP® is a secure, cloud based system that allows you to automate your environmental monitoring program (EMP) and assists with the entire sampling lifecycle.

ENVIROMAP® Benefits

Reliable Execution

- Ensure EMP is executed as intended.
- Standardization across plants and employees.
- Audit readiness.
- Trend & historical analysis.

Time & Cost savings

- Automated scheduling, Corrective and Preventive Actions, reporting.
- Faster & easier employee training.
- Reduce labor, production down time and water/chemicals usage.

Faster Time to Action

- Information readily available.
- Detect problems earlier with trending.
- Automated Corrective and Preventive Actions.

Optimize to your Operations



Flexibility of software allows you to **change and customize** sampling plans as needed.



Aggregates and synchronizes data (raw material testing, air, water, finished product).



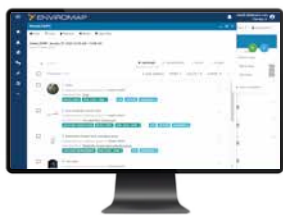
Connects to different types of data (equipment, testing, Third Party Lab).



Ease of implementation, **fully supported** and completed in 3-4 weeks with little disruption to operations.

Streamlined and flexible

Comprehensive Solution for Data-Driven Decisions



Smooth scheduling

- Automatically schedules the samples you need when you need them.
- View your schedule in advance as an easy-to-manage list mapped to your plant floor.

Automated Corrective Actions

- Designate investigative sites, workflow stoppage, and perimeter re-swabbing criteria.
- Automatically schedule corrective action activities.

Calendar & Task Manager

- Leverage access across your facility and co-manufacturer network in one platform to make decisions.

Historical Data Analysis & Reporting

- Flexible and easy to use reporting tools to present, analyze, and share results.
- Interactive result maps assist in decision-making for at-risk locations.
- Analyze data beyond Environmental Monitoring (in process, finished product, etc).
- QualMap for more impactful insights.

Real-time Results Notification

- Schedule, submit, record, and track any sampling procedure, regardless of location.
- Have complete control and visibility over every aspect of your environmental sampling.

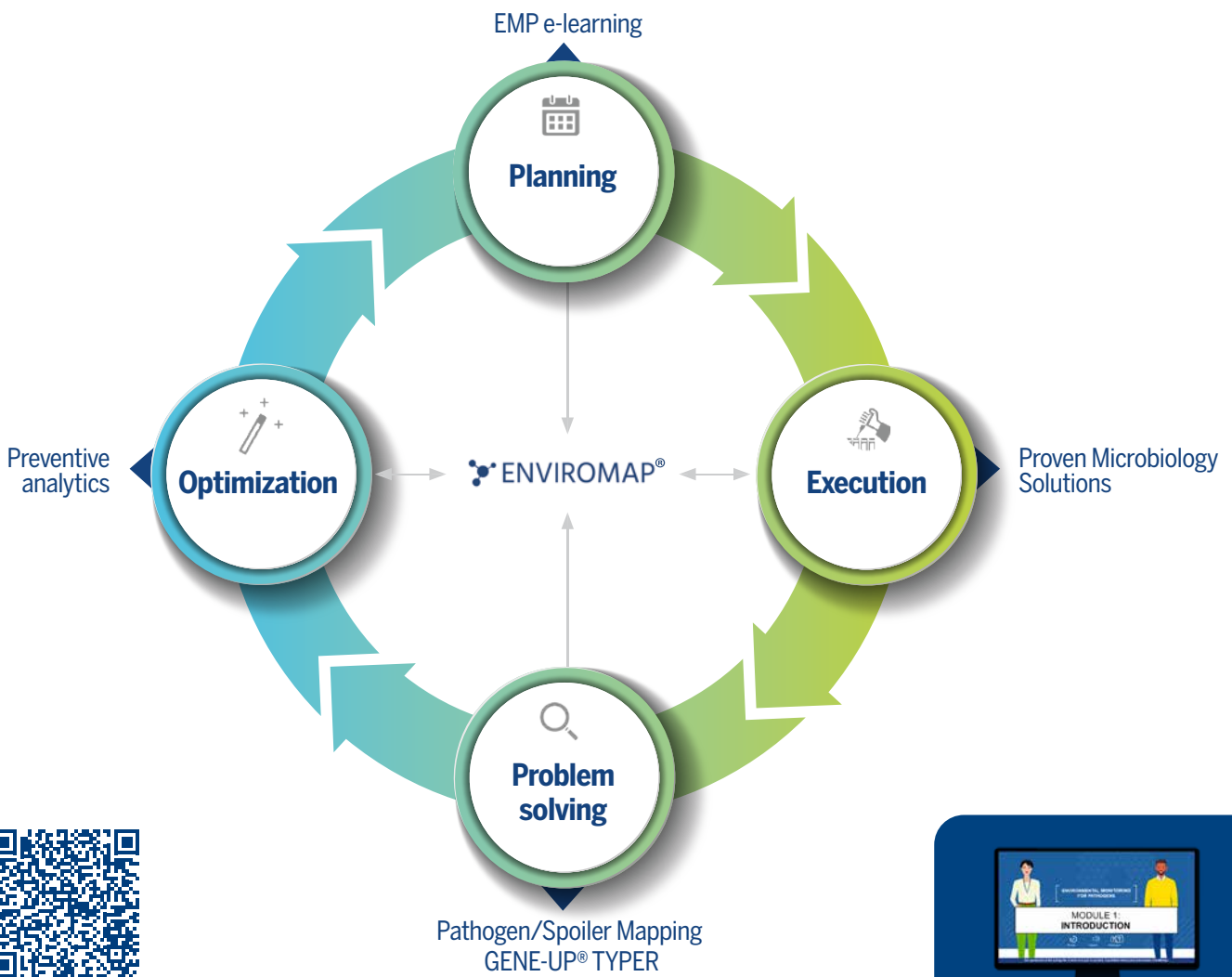
Sanitation Module Management

- Create sanitation areas, different activities to reflect SOPs.
- Set plan frequencies and assignments.
- Visualize sanitation compliance and effectiveness.



End-to-end solution for your environmental monitoring program

Our suite of solutions, including ENVIROMAP® software, can empower you to elevate your environmental monitoring process.



Need additional support to **build & implement** your EMP? Try out our **eLearning module!**

bioMérieux's data-driven Environmental Monitoring solutions help you identify potential spoilage or contamination issues in your facility and proactively address challenges.

Elevate your environmental monitoring program with our Augmented Diagnostics Approach.