

# CARBON REDUCTION PLAN



WE HELP MAKE THE WORLD A HEALTHIER PLACE

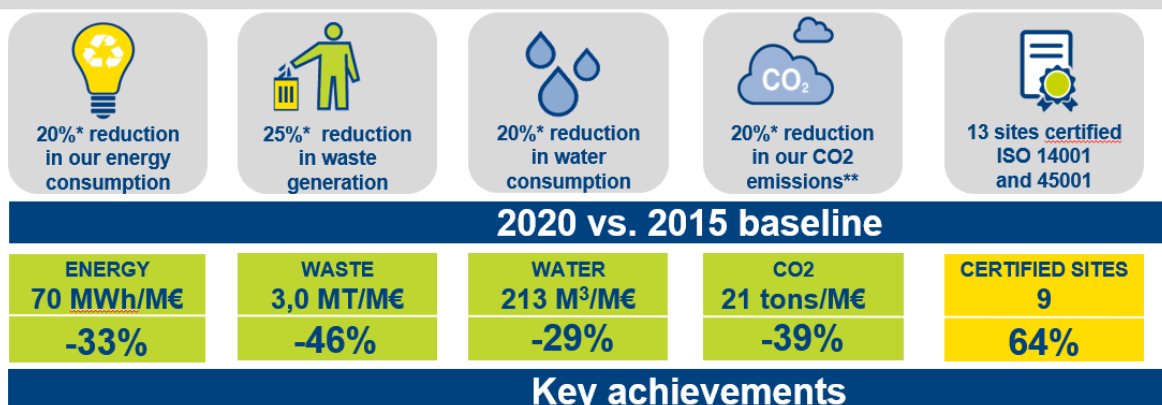


PIONEERING DIAGNOSTICS

## Commitment to achieving Net Zero

Working on reducing our environmental intensity is not a recent engagement for bioMérieux. Our company objectives on reducing our Waste generation, Water and Energy consumption, and Carbon Emissions date back to 2015, with key targets set in 2020 when bioMérieux launched our 2020 HSE Vision.

### 2020 HSE VISION PERFORMANCE – KEY ACHIEVEMENTS



- Lighting with LED / automatic lights
- Infra/Utility insulation
- New technology-based equipment
- Building conditioning optimization

Example: heat recovery from water cooling systems exchangers to supply the hot water network  
- 1,200 MWh

- Scrap reduction
- Material optimization

Example: suppress plastic packaging used for onsite transportation of finished products  
-5 tons/y

- Water balance monitoring
- Process efficiency
- New technology-based equipment

Example: suppression of the facility cooling towers  
-17,000 m<sup>3</sup>/y

- Energy efficiency
- Renewable electricity supply

Example: purchase of renewable electricity in France (50%), Italy and Spain (100%)

- Certification of the EMEA sites
- Initial audit in Durham, St-Louis, Lombard in Q1 2021: 1<sup>st</sup> positive result to be confirmed

\* From 2016 to 2020 – 2015 baseline (Intensities based on sales; accident rate based on worked hours)

\*\* over Scope 1 & Scope 2

Despite this overall incredibly good performance, the Worldwide situation with the Planet has continued to decline and concerns have raised. Therefore in 2021, bioMérieux decided to go further, reinforcing the Waste, Water and Energy Target (respectively -50%, - 45% and -50% vs. 2015, in revenue intensity), and has seen SBTi approving the following two 1.5°C aligned science-based targets:

- Reduce absolute Scope 1&2 GHG Emissions by 63% in 2034 vs. 2019 Base Year (i.e. 50% in 2030)
- Engage 67% of our suppliers by emissions covering purchased goods and services, fuel and energy related activities, upstream transportation and distribution, business travel and employee commuting, to have science-based targets by 2026

As far as we know, bioMérieux were the 1<sup>st</sup> IVD company engaging with SBTi targets and entered in the Dow Jones Sustainability Index in 2022.

The Company Planet Strategy and targets, its yearly Performance progress and achievements are publicly disclosed and audited by a Third Party Auditor every year (refer to our [2023 Universal Registration Document](#) to know more).

After three years of operational experiences, process upgrades, awareness raising, project implementation on the Carbon Reduction aspects, bioMérieux is now considering 2050 Net Zero engagement globally.

As a contributor of the Company Strategy and convinced on the need to act all along the Public Health value chain, bioMérieux UK is committing to achieve Net Zero by 2050.



## Baseline Emissions Footprint

Carbon emissions are calculated and monitored since 2014. All relevant Scope 1, 2 & 3 emissions items are calculated.

The Baseline Year for this report is 2019 as it is the bioMérieux reference year for SBTi targets.

<b>Emissions</b>	<b>Total (tons of CO2eq.)</b>
Scope 1 – Direct emissions <i>Building utilities, car fleet</i>	330
Scope 2 – Indirect emissions <i>Electricity consumption</i>	130
Scope 3 <i>Purchase of goods and services (60%), Use of our Finished Products by our customers (33%) Business Travel and Commuting of our employees (6%), Finished Products deliveries to customers (1%) and other not significant emission sources</i>	4,800
<b>Total bioMérieux UK emissions</b>	<b>5,260</b>

*Note: the predominance of Purchase of Goods and Services and Finished Products Usage emissions is typical from companies of general manufacturing sectors (versus Energy companies, Heavy Industry companies, Chemical Industry companies).*

## Most Recent Emission Reporting (2023)

<b>Emissions</b>	<b>Total (tons of CO2eq.)</b>
Scope 1 – Direct emissions <i>Building utilities, car fleet</i>	380
Scope 2 – Indirect emissions <i>Electricity consumption</i>	90
Scope 3 <i>Purchase of goods and services (68%), Use of our Finished Products by our customers (21%) Business Travel and Commuting of our employees (8%), Finished Products deliveries to customers (3%) and other not significant emission sources</i>	6,400
<b>Total bioMérieux UK emissions</b>	<b>6,870</b>

## Emissions Reduction Targets

Scope	Near Term Target	Long Term Target
Scope 1&2	Purchase 100% renewable electricity by 2025	Purchase 100% renewable energy by 2050
Scope 1		Convert the car fleet to 100% electrical vehicles by 2030
Scope 3		40% reduction of Business Travel emissions by 2030

## Carbon Reduction Projects

Our Carbon Reduction Plan consists of the following programs, projects and initiatives:

### Scope 1&2:

- Reduce Energy Consumption, as a contribution to the Company target (-50% energy consumption in 2025 vs. 2015 – revenue intensity based, and further targets post-2025)
- Current work with our Purchasing Department to purchase renewable energy (electricity on the short term, and other energy on the medium to long term) and fossil fuel substitution projects.
- Current work with our car leasing company to set-up a conversion plan in connection with the car fleet contract renewal periods.

### Scope 3:

- Reduction of the Goods & Services emissions with a supplier engagement process (supporting our Company Scope 3 SBTi target - ref. above)
- Continuation of programs to reduce Business Travel and Employee commuting emissions
- Reduction of our product footprint with the support of the Company Ecodesign Program and the bioMérieux UK Transportation Efficiency and Decarbonation plan
- Deployment of awareness programs (e.g. 100% of employees trained by EOY 2025)



## Declaration and Sign Off

This Carbon Reduction Plan has been completed in accordance with PPN 06/21 and associated guidance and reporting standards for Carbon Reduction Plans.

Emissions have been reported and recorded in accordance with the published reporting standard for Carbon Reduction Plans and the GHG Reporting Protocol corporate standard and uses the most reputed and recognized emission conversion factors for greenhouse gas company reporting. Scope 1 & 2 CO<sub>2</sub> emissions followed the Market-based approach of the GHG Protocol, while Scope 3 emissions have been reported in accordance with the Corporate Value Chain (Scope 3) of the same protocol.

Carbon emissions calculation and reporting methodologies are detailed in our URD ([URD 2023](#), page 140) as well as the independent Third Party auditor verification statement ([URD 2023](#), page 141).

This Carbon Reduction Plan has been reviewed and signed off by the board of directors (or equivalent management body).

Signed on behalf of the Supplier:

Date: 01 May 2024

A handwritten signature in black ink, appearing to be 'P. Skingley'.

Paul Skingley

Clinical Vice President – UK Cluster